



Guidelines for the use of Spikefast



The use of gloves is strongly recommended during the handling of Spikefast.

This is how Spikefast is packaged, two tubes of component materials that react to form Spikefast resin.

Please familiarise yourself with the COSHH Assessment before using the product and dispose of waste tubes and packaging in accordance with your company policy on waste materials.



Hold the tubes upright and unscrew the large cap.

Carefully prise off the plastic plug in the end of the tube, a small screwdriver is useful for this (you may need this plug later if you only use part of a tube and want to re-seal it).



Slide the large cap down over the mixing tube and hand tighten on to the material tubes, ensuring a good seal between them.



Fit the cartridges into the applicator and pump the plunger until it is just applying pressure to the tubes.

IMPORTANT !

Before you start filling holes, hold the applicator vertical and slowly fill the mixing tube to remove any air and ensure the two material components are mixed evenly.



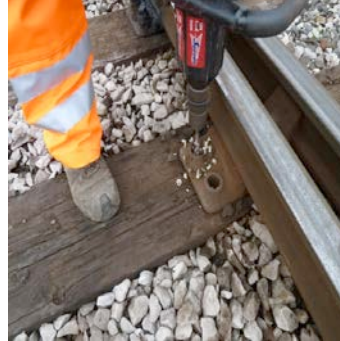
Insert the end of the mixing tube into the hole to be filled and squeeze the trigger to force the material through the mixing tube into the hole. Fill the hole from the bottom upwards, if you start filling from the top only, voiding may occur and you will not get a solid fill.

If you stop filling holes and have material left in the cartridges, material in the mixing tube will set in about 2 minutes. A new mixing tube will have to be fitted to use the remaining material in the cartridge.



Carefully observe the speed the material is filling the hole, release the pressure from the tubes as you fill to the top of the sleeper. Should the Spikefast dry proud of the hole and interfere with the flush fitting of the baseplate, the excess material can be removed prior to drilling with a file or surform. If baseplates do not have to be moved to modify track geometry, the Spikefast can be applied through the baseplates or ferrules. Always ensure the holes are filled from the bottom of the timber upwards.

Depending on air temperature, set time before re-drilling can vary between 20 and 25 minutes. Spikefast can be used in any weather conditions, even if screw holes are full of water.



When Spikefast has completed its curing time, it is then ready to drill. The filled hole should be drilled as you would on a new sleeper. If baseplates/chairs have to be adjusted for track alignment, you can drill half and half as in the above photo.



Insert chair screw and torque as normal.

Notes on Spikefast Storage:

Spikefast has a shelf life of 12 months, if materials has been held in stock for 5 months a regime of rotating boxes 180 degrees is required to keep the chemical components mixed in each cartridge prior to use.



Tel: +353 42 9690882
Email: sales@rivval.com